



MONTHLY MEMBERSHIP PROGRESS REPORT

District 5M 9

Results as of: 5/31/2015

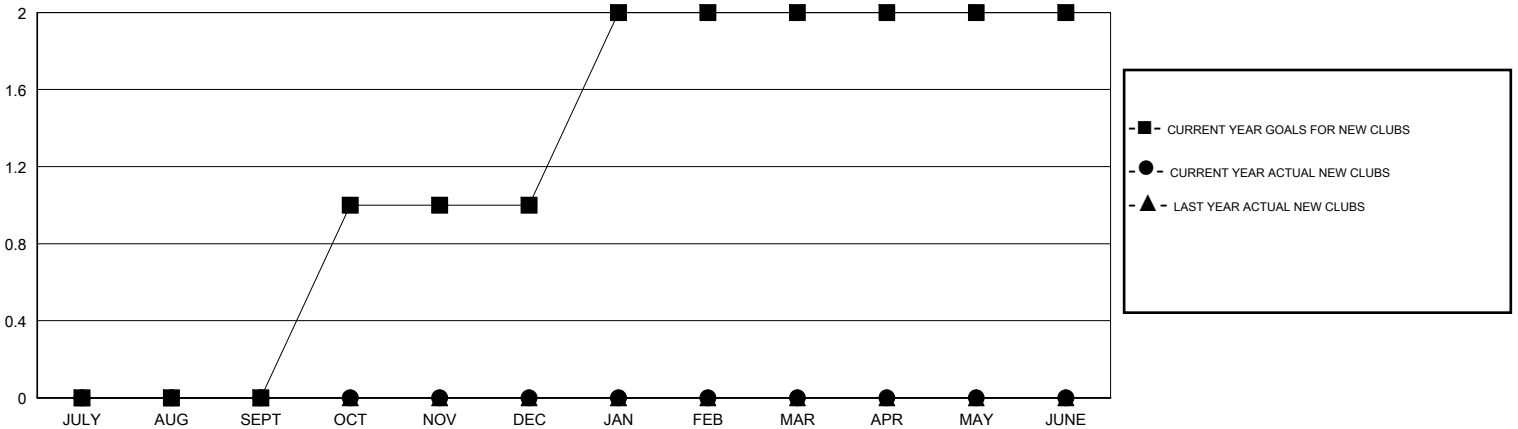
GMT: Judy Hankom

LOCATION MINNESOTA

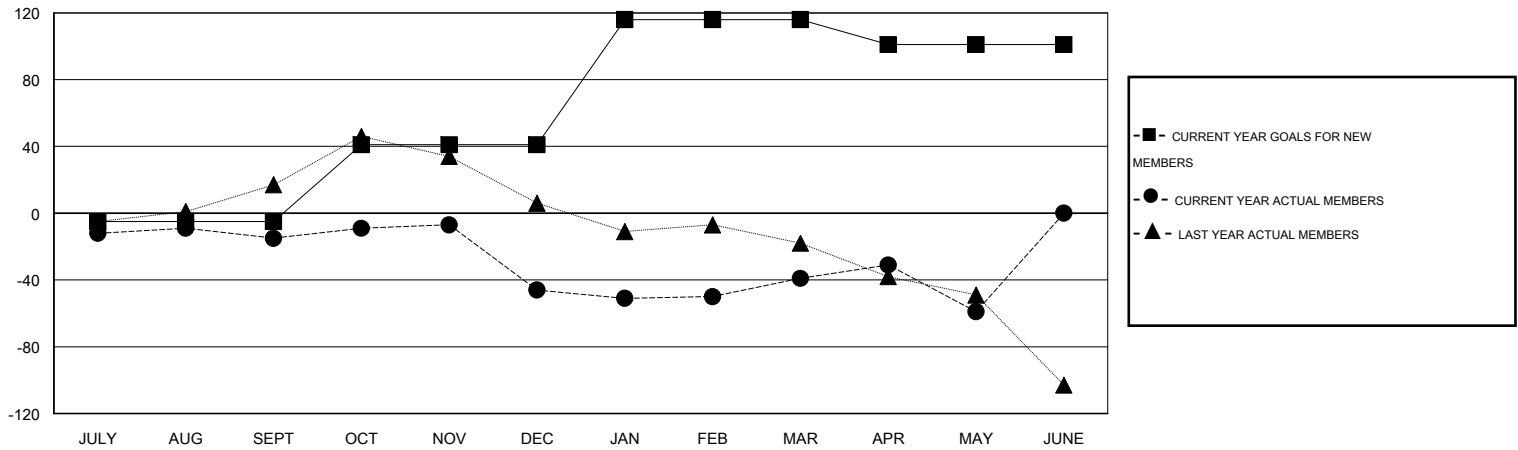
GMT CA 1

Clubs					Members				
RESULTS FOR 2014-2015					RESULTS FOR 2014-2015				
QUARTER	NEW CLUB GOAL	NEW CLUBS	DROPPED CLUBS	NET GAIN/LOSS	QUARTER	NEW MEMBER GOAL	CHARTER AND NEW MEMBERS ADDED	DROPPED MEMBERS	NET GAIN/LOSS
JULY/AUG/SEPT	0	0	1	-1	JULY/AUG/SEPT	-5	45	60	-15
OCT/NOV/DEC	1	0	0	0	OCT/NOV/DEC	46	41	72	-31
JAN/FEB/MAR	1	0	0	0	JAN/FEB/MAR	75	36	29	7
APR/MAY/JUNE	0	0	1	-1	APR/MAY/JUNE	-15	31	51	-20

GOALS AND ACTUAL NEW CLUBS CUMULATIVE



GOALS AND ACTUAL MEMBERS CUMULATIVE



DROPPED CLUBS: 2	45 CLUBS OF 65 ADDED 1 OR MORE NEW MEMBERS	GENDER DISTRIBUTION
		MALE 1,502 (65.11%)
		FEMALE 805 (34.89%)
DROPPED MEMBERS	CLICK HERE FOR HEALTH ASSESSMENT DATA	FAMILY UNIT MEMBERS 723
DECEASED 28		HEAD OF HOUSEHOLD 357
CLUB CANCELLED 18		NON-HEAD OF HOUSEHOLD 366
OTHER 166		
TOTAL 212		